

# \$7,000,000 - Glenbow Rd. & Mountain Ridge Place Road, Rural Rocky View County

---

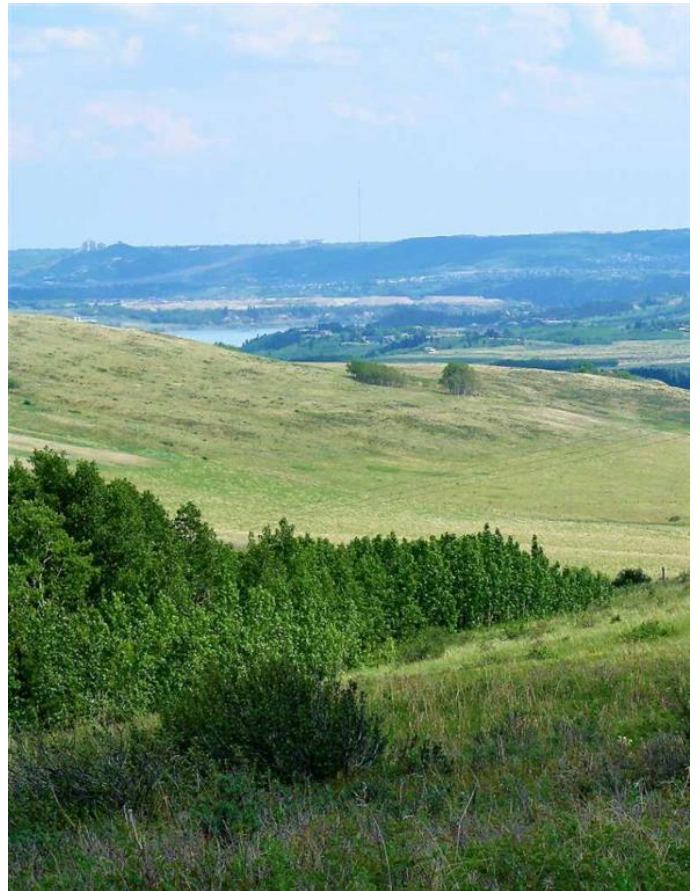
MLS® #A1245685

**\$7,000,000**

0 Bedroom, 0.00 Bathroom,  
Land on 157.52 Acres

NONE, Rural Rocky View County, Alberta

Own A Piece Of History! Gorgeous undeveloped quarter bordering the famous Glenbow Ranch Provincial Park! You'll fall in love with this pristine property with expansive views of the bow river corridor from Calgary to westerly Rockies! A way of life and a look at history a 100years ago! Develop your own private ranch, hold it for future generations or take a look at the Glenbow Ranch ASP and explore this prime piece of real estate. Come and explore, you'll never regret your decision to own this piece of history! Seller to retain 50% of Build Credits if the property is rezoned for development.



## Essential Information

MLS® #	A1245685
Price	\$7,000,000
Bathrooms	0.00
Acres	157.52
Type	Land
Sub-Type	Residential Land
Status	Active

## Community Information

Address	Glenbow Rd. & Mountain Ridge Place Road
Subdivision	NONE
City	Rural Rocky View County

County	Rocky View County
Province	Alberta
Postal Code	T0L 0W0

### **Amenities**

Utilities	Electricity at Lot Line
-----------	-------------------------

### **Exterior**

Lot Description	Conservation, Creek/River/Stream/Pond, Near Golf Course, Meadow, Native Plants, Pasture, Rolling Slope, Seasonal Water, Secluded, Sloped
-----------------	--

### **Additional Information**

Date Listed	August 11th, 2022
Days on Market	851
Zoning	AG - general

### **Listing Details**

Listing Office	CIR REALTY
----------------	------------

Data is supplied by Pillar 9â„¢ MLS® System. Pillar 9â„¢ is the owner of the copyright in its MLS® System. Data is deemed reliable but is not guaranteed accurate by Pillar 9â„¢. The trademarks MLS®, Multiple Listing Service® and the associated logos are owned by The Canadian Real Estate Association (CREA) and identify the quality of services provided by real estate professionals who are members of CREA. Used under license.