

\$299,999 - 101, 67325 Churchill Park Road, Lac La Biche County

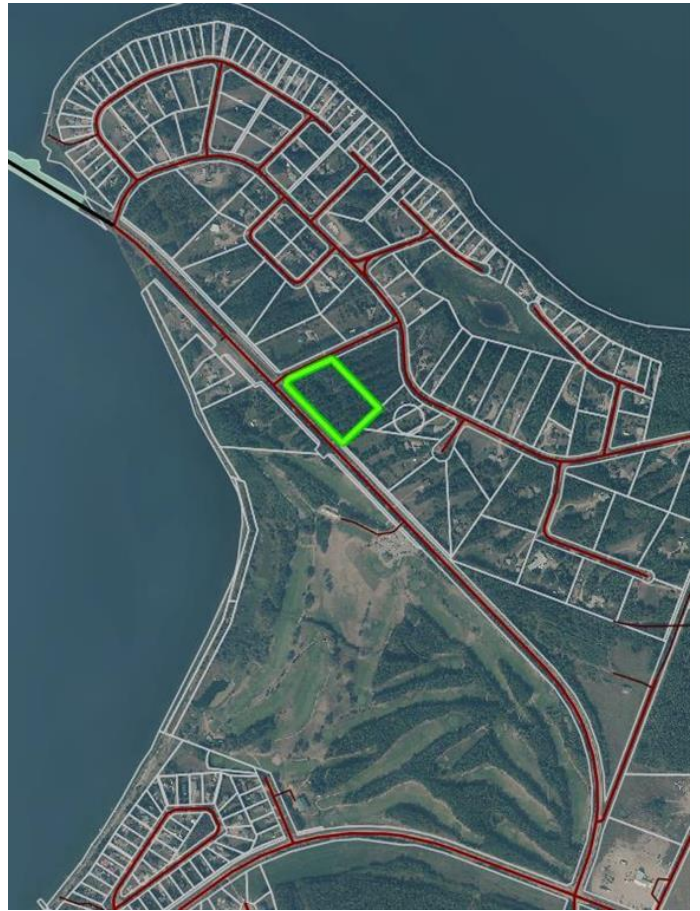
MLS® #A2075471

\$299,999

0 Bedroom, 0.00 Bathroom,
Land on 5.54 Acres

NONE, Lac La Biche County, Alberta

Lakeview Estates 5.54 acre fully serviced lot. This is a rare property being one of the largest serviced properties in Lakeview estates. Across from the Lac La Biche Golf Club . 5 minutes from lac La Biche schools and shopping and one minute from the Lake. Walking trails and boat launch close by as well as back country lake, quadding and hunting grounds minutes from your front door. Sale price is subject to GST .



Essential Information

| | |
|-----------|------------------|
| MLS® # | A2075471 |
| Price | \$299,999 |
| Bathrooms | 0.00 |
| Acres | 5.54 |
| Type | Land |
| Sub-Type | Residential Land |
| Status | Active |

Community Information

| | |
|-------------|--------------------------------|
| Address | 101, 67325 Churchill Park Road |
| Subdivision | NONE |
| City | Lac La Biche County |
| County | Lac La Biche County |
| Province | Alberta |
| Postal Code | T0A 2C1 |

Additional Information

| | |
|------------------------|------------------------|
| Date Listed | August 22nd, 2023 |
| Days on Market | 606 |
| Zoning | Country Residential |
| Listing Details | |
| Listing Office | RE/MAX LA BICHE REALTY |



Data is supplied by Pillar 9â„¢ MLSÂ® System. Pillar 9â„¢ is the owner of the copyright in its MLSÂ® System. Data is deemed reliable but is not guaranteed accurate by Pillar 9â„¢. The trademarks MLSÂ®, Multiple Listing ServiceÂ® and the associated logos are owned by The Canadian Real Estate Association (CREA) and identify the quality of services provided by real estate professionals who are members of CREA. Used under license.

