

# \$25 - 5403 48 Avenue, Camrose

MLS® #A2080115

**\$25**

0 Bedroom, 0.00 Bathroom,  
Commercial on 0.00 Acres

Downtown Camrose, Camrose, Alberta

Join current tenants Mirror Lake Dental and Camrose Pharmacy. 1360 sq ft and 2140 sq ft available. Or combine them both to have a total of 3500 sq ft. This immaculate new building with excellent high visibility exposure could be ideal for your business. Situated in the heart of the city and directly across from Camrose's iconic Mirror Lake. Built by local builders and a location that truly doesn't get any better. Asking lease rates are \$25/sqft NNN.

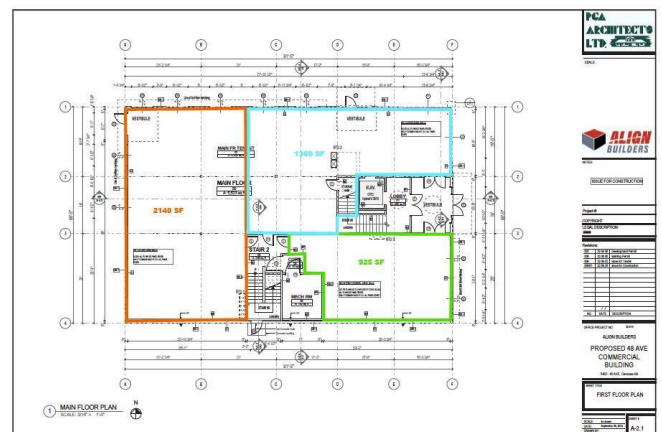
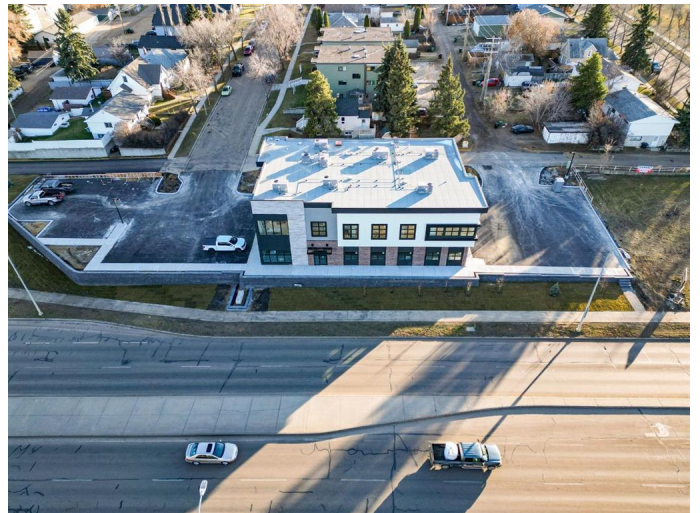
Built in 2022

## Essential Information

|            |            |
|------------|------------|
| MLS® #     | A2080115   |
| Price      | \$25       |
| Bathrooms  | 0.00       |
| Acres      | 0.00       |
| Year Built | 2022       |
| Type       | Commercial |
| Sub-Type   | Mixed Use  |
| Status     | Active     |

## Community Information

|             |                  |
|-------------|------------------|
| Address     | 5403 48 Avenue   |
| Subdivision | Downtown Camrose |
| City        | Camrose          |
| County      | Camrose          |
| Province    | Alberta          |
| Postal Code | T4V 0J6          |



## Additional Information

|                |                      |
|----------------|----------------------|
| Date Listed    | September 13th, 2023 |
| Days on Market | 584                  |
| Zoning         | DC                   |

## Listing Details

|                |            |
|----------------|------------|
| Listing Office | CIR Realty |
|----------------|------------|

Data is supplied by Pillar 9â„¢ MLS® System. Pillar 9â„¢ is the owner of the copyright in its MLS® System. Data is deemed reliable but is not guaranteed accurate by Pillar 9â„¢. The trademarks MLS®, Multiple Listing Service® and the associated logos are owned by The Canadian Real Estate Association (CREA) and identify the quality of services provided by real estate professionals who are members of CREA. Used under license.