

\$699,000 - 8636 19 Avenue, Coleman

MLS® #A2161461

\$699,000

0 Bedroom, 0.00 Bathroom, 1,783 sqft
Multi-Family on 0.00 Acres

NONE, Coleman, Alberta

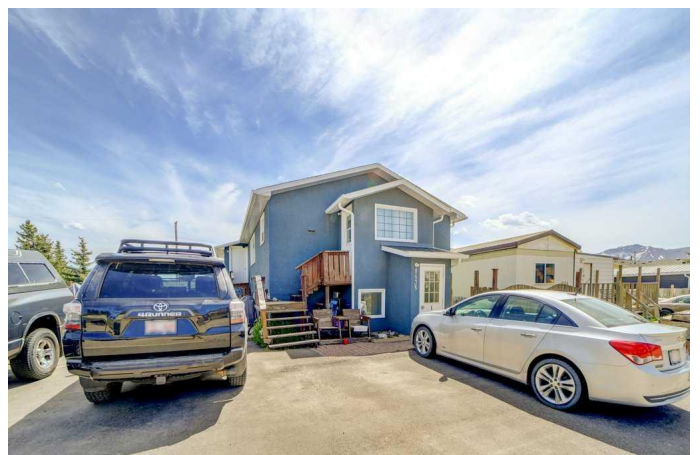
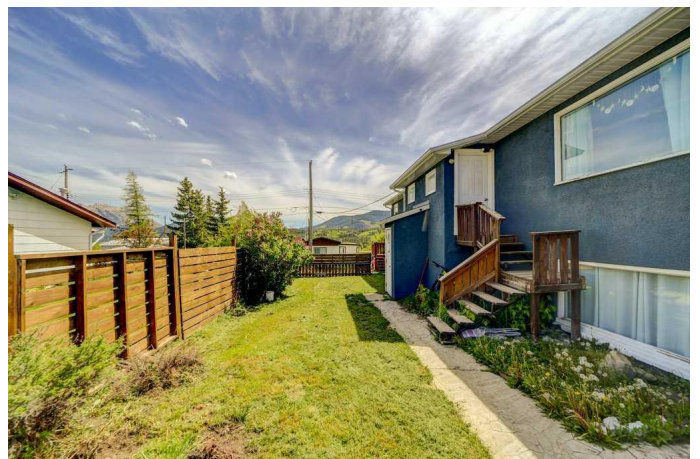
Welcome to Coleman, Crowsnest Pass. Investors take note of this 4 plex multi family unit constructed in 1972. There are two units above grade (908 sq. ft each) and 2 units below grade (874 sq. ft. each) , all with large windows to capture light and views. All units are two bedroom, 1 bathroom with washer & dryer in each unit as well. All units are individually metered for power and natural gas & contain their own natural gas furnace & hot water tank. All units are occupied and carry 1 year leases effective October 2024. Situated in a convenient location with easy access to amenities and a shortened commute to work in the Elk Valley.

Built in 1972

Essential Information

MLS® #	A2161461
Price	\$699,000
Bathrooms	0.00
Square Footage	1,783
Acres	0.00
Year Built	1972
Type	Multi-Family
Sub-Type	4 plex
Style	Apartment
Status	Active

Community Information



Address	8636 19 Avenue
Subdivision	NONE
City	Coleman
County	Crowsnest Pass
Province	Alberta
Postal Code	T0K 0M0

Amenities

Parking Spaces	4
Parking	Off Street, Side By Side, Shared Driveway

Interior

Appliances	Electric Stove, Refrigerator, Washer/Dryer
Heating	Forced Air, Natural Gas
Cooling	None
# of Stories	1

Exterior

Roof	Asphalt Shingle
Construction	Stucco
Foundation	Block

Additional Information

Date Listed	August 29th, 2024
Days on Market	197
Zoning	Multiple Residential

Listing Details

Listing Office	RE/MAX REAL ESTATE - LETHBRIDGE
----------------	---------------------------------

Data is supplied by Pillar 9â„¢ MLSÂ® System. Pillar 9â„¢ is the owner of the copyright in its MLSÂ® System. Data is deemed reliable but is not guaranteed accurate by Pillar 9â„¢. The trademarks MLSÂ®, Multiple Listing ServiceÂ® and the associated logos are owned by The Canadian Real Estate Association (CREA) and identify the quality of services provided by real estate professionals who are members of CREA. Used under license.