

# \$599,900 - 115 Terrace View Ne, Medicine Hat

MLS® #A2193739

**\$599,900**

3 Bedroom, 3.00 Bathroom, 1,728 sqft  
Residential on 0.16 Acres

Terrace, Medicine Hat, Alberta

Welcome to your new oasis in the serene neighborhood of Terrace Crescent Heights. This beautifully designed 3-bedroom, 2.5-bathroom home offers a perfect blend of comfort and modern living, making it an ideal choice for families or those seeking a peaceful retreat. As you step through the front door, you are greeted by a spacious open floorplan filled with natural light from the large windows that adorn the space. The inviting atmosphere is perfect for both relaxation and entertaining. The bright kitchen features ample counter space and modern appliances, making it a joy to cook and gather with family. Just off the kitchen, a charming deck provides a perfect spot to unwind while overlooking the stunning coulee, offering picturesque views that change with the seasons. The main floor also includes convenient laundry facilities and a cozy nook near the entrance, providing extra space for storage or a small reading area. Venture down to the lower level, where you'll find a generous family room designed for entertaining. Complete with a wet bar, this space is perfect for hosting friends and family gatherings. Adjacent to the family room, a versatile rec room offers additional options for play or relaxation. For cozy family movie nights, a dedicated theater room awaits, ensuring that entertainment is always at your fingertips. The lower level features two well-sized bedrooms, conveniently located next to each other. These bedrooms share a thoughtfully designed bathroom with separate



sinks, providing both privacy and convenience for family members or guests. This stunning home in Terrace Crescent Heights combines modern amenities with the tranquility of a quiet neighborhood. With its bright open spaces, inviting outdoor views, and ample entertainment options, itâ€™s a perfect sanctuary for those looking to create lasting memories. Donâ€™t miss your chance to call this beautiful property your own!

Built in 2005

### Essential Information

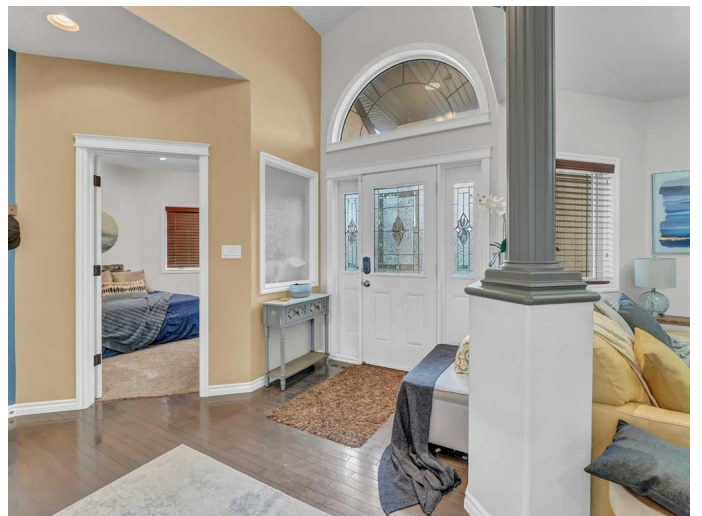
MLS® #	A2193739
Price	\$599,900
Bedrooms	3
Bathrooms	3.00
Full Baths	2
Half Baths	1
Square Footage	1,728
Acres	0.16
Year Built	2005
Type	Residential
Sub-Type	Detached
Style	Bungalow
Status	Active

### Community Information

Address	115 Terrace View Ne
Subdivision	Terrace
City	Medicine Hat
County	Medicine Hat
Province	Alberta
Postal Code	T1C0A2

### Amenities

Parking Spaces	2
Parking	Double Garage Attached, Parking Pad



# of Garages 2

### **Interior**

Interior Features Wet Bar  
Appliances See Remarks  
Heating Forced Air  
Cooling Central Air  
Fireplace Yes  
# of Fireplaces 2  
Fireplaces Gas  
Has Basement Yes  
Basement Finished, Full, Walk-Out

### **Exterior**

Exterior Features None  
Lot Description Back Yard  
Roof Asphalt Shingle  
Construction Mixed  
Foundation Poured Concrete

### **Additional Information**

Date Listed February 10th, 2025  
Days on Market 32  
Zoning R-LD

### **Listing Details**

Listing Office ROYAL LEPAGE COMMUNITY REALTY

Data is supplied by Pillar 9â„¸ MLSÂ® System. Pillar 9â„¸ is the owner of the copyright in its MLSÂ® System. Data is deemed reliable but is not guaranteed accurate by Pillar 9â„¸. The trademarks MLSÂ®, Multiple Listing ServiceÂ® and the associated logos are owned by The Canadian Real Estate Association (CREA) and identify the quality of services provided by real estate professionals who are members of CREA. Used under license.