

\$479,000 - 915 Argue Drive, Hanna

MLS® #A2194241

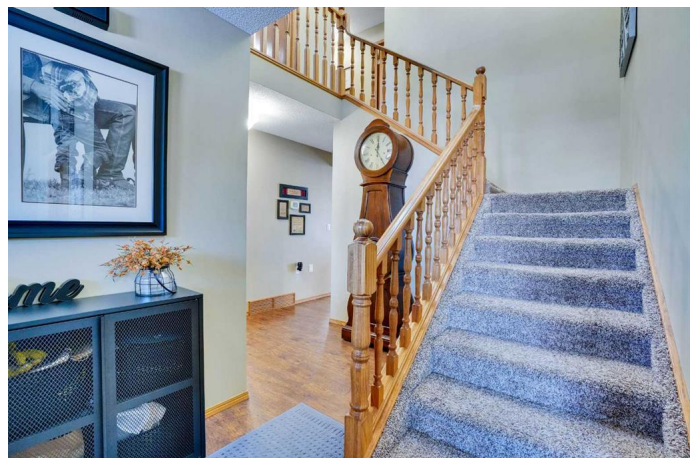
\$479,000

5 Bedroom, 4.00 Bathroom, 2,302 sqft

Residential on 0.15 Acres

Hanna, Hanna, Alberta

Stunning 5-Bedroom, 4-Bathroom home in a tranquil neighborhood. Nestled in a peaceful, family-friendly neighborhood, this meticulously maintained home offers 5 spacious bedrooms and 4 beautifully updated bathrooms. Ideally located near the hospital, medical clinic, and golf course, convenience is at your doorstep. Step inside to discover recent upgrades throughout, including modern appliances, elegant quartz countertops in the kitchen, bathrooms, and bar area, as well as newer windows, flooring, heating systems, and light fixtures. The home also boasts freshly replaced toilets and sinks for added peace of mind. Upstairs, you'll find 3 generously-sized bedrooms, including a luxurious primary suite complete with a large ensuite and walk-in closet. The main floor is designed for both function and comfort, featuring a grand entry, formal living and dining rooms, a cozy kitchen with an inviting eating nook, and a spacious living room with a charming wood-burning fireplace (gas assist). A convenient half bath and laundry room complete the main level, with easy access to the attached 2-car garage. Step outside onto the expansive deck and unwind in your private backyard oasis. Enjoy the serene open field behind you with no immediate neighbors, as well as a lush lawn featuring newly installed sod. A 5-year-old hot tub provides the perfect spot to relax year-round. The fully finished basement offers 2 additional bedrooms, a massive recreation room, a full bathroom, a wet bar, and a large



furnace/storage room. Stay warm during the winter months with forced air heating and in-floor heating both downstairs and in the garage. Central air conditioning ensures comfort during summer's hottest days. The home is equipped with underground sprinklers to keep the lawn vibrant all summer long, while permanent under-eave lighting can be programmed to create a festive ambiance for any season or holiday. Move-in ready and brimming with thoughtful details, this exceptional home is one you need to see to fully appreciate. Call today to schedule a private viewing and check out the 3D Virtual Tour at https://youriguide.com/915_argue_dr_hanna_ab

Built in 1989

Essential Information

MLS® #	A2194241
Price	\$479,000
Bedrooms	5
Bathrooms	4.00
Full Baths	2
Half Baths	2
Square Footage	2,302
Acres	0.15
Year Built	1989
Type	Residential
Sub-Type	Detached
Style	2 Storey
Status	Active

Community Information

Address	915 Argue Drive
Subdivision	Hanna
City	Hanna
County	Special Area 2

Province	Alberta
Postal Code	T0J 1P0

Amenities

Parking Spaces	4
Parking	Double Garage Attached, Off Street
# of Garages	2

Interior

Interior Features	Central Vacuum, Quartz Counters, Vinyl Windows, Walk-In Closet(s), Wet Bar
Appliances	Bar Fridge, Central Air Conditioner, Dishwasher, Microwave, Refrigerator, Stove(s), Window Coverings
Heating	Boiler, Fireplace(s), Forced Air, Combination
Cooling	Central Air
Fireplace	Yes
# of Fireplaces	1
Fireplaces	Wood Burning
Has Basement	Yes
Basement	Full, Partially Finished

Exterior

Exterior Features	Private Yard
Lot Description	Back Lane, Back Yard, Backs on to Park/Green Space, Lawn, No Neighbours Behind, Rectangular Lot, Street Lighting, Close to Clubhouse, Underground Sprinklers
Roof	Asphalt Shingle
Construction	Concrete, Wood Frame
Foundation	Poured Concrete

Additional Information

Date Listed	February 15th, 2025
Days on Market	65
Zoning	R1

Listing Details

Listing Office	eXp Realty
----------------	------------

Data is supplied by Pillar 9â„¢ MLS® System. Pillar 9â„¢ is the owner of the copyright in its MLS® System. Data is deemed reliable but is not guaranteed accurate by Pillar 9â„¢. The trademarks MLS®, Multiple Listing Service® and the associated logos are owned by The Canadian Real Estate Association (CREA) and identify the quality of services

