

\$2,100,000 - 702, 600 Princeton Way Sw, Calgary

MLS® #A2196409

\$2,100,000

2 Bedroom, 3.00 Bathroom, 2,130 sqft
Residential on 0.00 Acres

Eau Claire, Calgary, Alberta

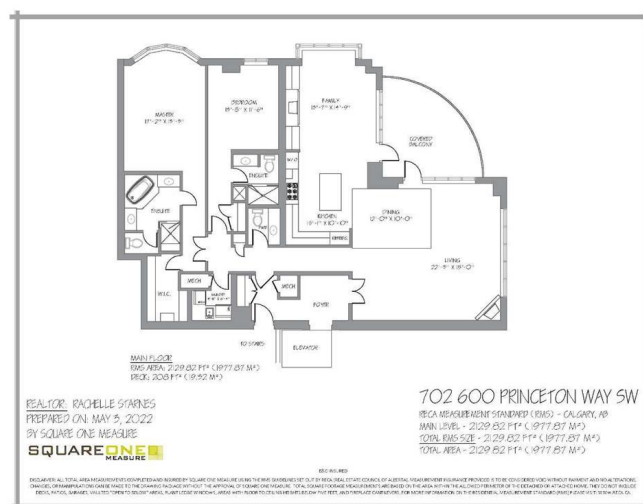
Experience refined elegance and luxury living in the prestigious Princeton Grand. Your exclusive lifestyle begins the moment you step into your private, direct-to-suite elevator, arriving at an exceptional northwest corner residence. Floor-to-ceiling windows flood the space with natural light while showcasing breathtaking elevated views, including the Bow River and Peace Bridge.

Designed for effortless entertaining and comfort, this expansive open-concept home features grand living and dining areas, highlighted by a cozy gas fireplace and seamless access to a spacious covered balcony. The gourmet kitchen is a chef's dream, boasting high-end stainless steel appliances, a five-burner gas stove, powerful hood fan, built-in oven and microwave, rich granite countertops, soft-close cabinetry, and an oversized island perfect for hosting. A cozy family/great room with a custom gas fireplace provides additional space for relaxation or to house your work at home space.

Retreat to the luxurious primary suite, complete with a spa-inspired, fully renovated ensuite featuring heated floors, a freestanding soaking tub, dual vanities, a separate glass shower, and a custom walk-in closet with built-in organizers. A spacious guest bedroom includes its own private three-piece ensuite for ultimate convenience.

Additional highlights:

*Dedicated laundry room & storage area



*Two titled parking stalls

*Secure titled storage locker

World-Class Amenities with an Unbeatable Location

Princeton Grand offers resort-style amenities, including:

*24-hour professional concierge service

*Luxury guest suites for visitors

*Temperature-controlled wine tasting room with private lockers

*State-of-the-art fitness center & yoga studio

*Steam room, dry sauna, and change rooms with lockers & showers

*Social lounge with full kitchen & bathroom

*Underground car wash bay

*Freight elevator for move-ins/outs

Nestled in the heart of Eau Claire, this extraordinary location is steps from Princeâ€™s Island Park, the Bow River pathways, fine dining, boutique shopping, and easy access to Calgaryâ€™s vibrant downtown. The Peace Bridge, Kensington, Safeway, LRT, and +15 skywalk system are all within walking distance.

Discover the ultimate in urban luxury living, welcome home!

Built in 2007

Essential Information

MLS® #	A2196409
Price	\$2,100,000
Bedrooms	2
Bathrooms	3.00
Full Baths	2
Half Baths	1
Square Footage	2,130
Acres	0.00
Year Built	2007
Type	Residential
Sub-Type	Apartment

Style High-Rise (5+)
Status Active

Community Information

Address 702, 600 Princeton Way Sw
Subdivision Eau Claire
City Calgary
County Calgary
Province Alberta
Postal Code T2P 5N4

Amenities

Amenities Elevator(s), Fitness Center, Park, Party Room, Picnic Area, Playground, Sauna, Secured Parking, Storage, Guest Suite
Parking Spaces 2
Parking Parkade, Titled
of Garages 2

Interior

Interior Features Bookcases, Double Vanity, Elevator, Granite Counters, No Animal Home, No Smoking Home, Open Floorplan, Soaking Tub, Wired for Sound, Natural Woodwork
Appliances Built-In Oven, Dishwasher, Gas Cooktop, Refrigerator, Washer/Dryer
Heating Forced Air, Natural Gas
Cooling Central Air
Fireplace Yes
of Fireplaces 2
Fireplaces Family Room, Gas, Living Room, Insert
of Stories 19

Exterior

Exterior Features Balcony
Roof Metal
Construction Brick, Concrete, Stucco
Foundation Poured Concrete

Additional Information

Date Listed February 28th, 2025
Days on Market 36
Zoning DC

Listing Details

Listing Office Coldwell Banker Mountain Central

Data is supplied by Pillar 9â,,ç MLSÂ® System. Pillar 9â,,ç is the owner of the copyright in its MLSÂ® System. Data is deemed reliable but is not guaranteed accurate by Pillar 9â,,ç. The trademarks MLSÂ®, Multiple Listing ServiceÂ® and the associated logos are owned by The Canadian Real Estate Association (CREA) and identify the quality of services provided by real estate professionals who are members of CREA. Used under license.