

\$254,900 - 1405, 2520 Palliser Drive Sw, Calgary

MLS® #A2198580

\$254,900

2 Bedroom, 1.00 Bathroom, 1,110 sqft
Residential on 0.00 Acres

Oakridge, Calgary, Alberta

Welcome to 1405 Palace Oak! Situated in a prime area of Calgary across the street from Glenmore Park with tennis & sailing. Minutes to Fish Creek Park, Heritage Park, shopping, sports complex, and the reservoir. Live in a quiet community, with great access to the rest of the City, just off 14th Ave SW, and minutes to Glenmore & Southland drive.

Excellent three level unit with tons of space, a great layout, 2 Large bedrooms and a HUGE sunny deck!

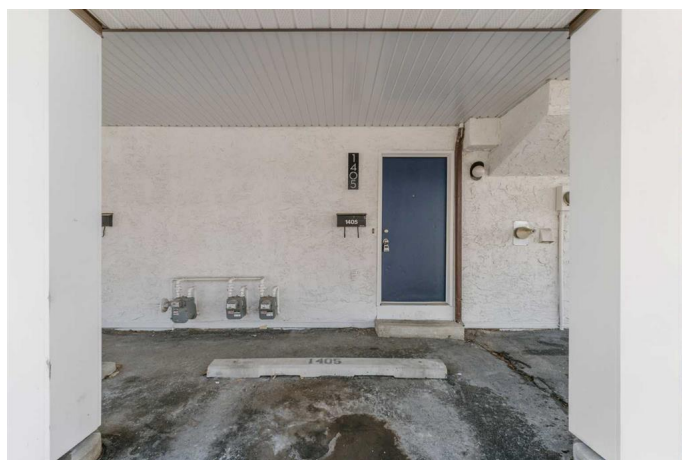
One assigned parking stall included at front of unit entrance.

* In unit laundry and tons of storage!**.

Built in 1976

Essential Information

MLS® #	A2198580
Price	\$254,900
Bedrooms	2
Bathrooms	1.00
Full Baths	1
Square Footage	1,110
Acres	0.00
Year Built	1976



Type	Residential
Sub-Type	Row/Townhouse
Style	Stacked Townhouse
Status	Active

Community Information

Address	1405, 2520 Palliser Drive Sw
Subdivision	Oakridge
City	Calgary
County	Calgary
Province	Alberta
Postal Code	T2V 4S9

Amenities

Amenities	None
Parking Spaces	1
Parking	Stall

Interior

Interior Features	See Remarks
Appliances	Dryer, Refrigerator, Washer, Electric Oven
Heating	Forced Air
Cooling	None
Basement	None

Exterior

Exterior Features	Balcony, Private Entrance
Lot Description	Backs on to Park/Green Space
Roof	Asphalt Shingle
Construction	Stucco, Wood Frame, Wood Siding
Foundation	Poured Concrete

Additional Information

Date Listed	March 5th, 2025
Days on Market	30
Zoning	M-C1

Listing Details

Listing Office	Drummer Realty & Property Management
----------------	--------------------------------------

Data is supplied by Pillar 9â„¸ MLSÂ® System. Pillar 9â„¸ is the owner of the copyright in its MLSÂ® System. Data is deemed reliable but is not guaranteed accurate by Pillar 9â„¸. The trademarks MLSÂ®, Multiple Listing ServiceÂ® and the associated logos are owned by The Canadian Real Estate Association (CREA) and identify the quality of services provided by real estate professionals who are members of CREA. Used under license.