

\$599,000 - 102 Palmer Circle, Blackfalds

MLS® #A2200667

\$599,000

4 Bedroom, 4.00 Bathroom, 1,841 sqft
Residential on 0.13 Acres

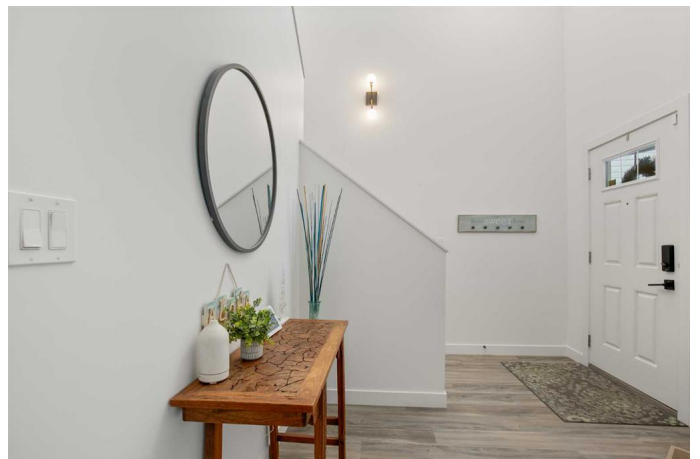
Panorama Estates, Blackfalds, Alberta

Welcome to your dream home! This stunning 2-story family residence offers 4 spacious bedrooms, 3.5 bathrooms, and a dedicated main floor office—perfect for remote work or study. Built in 2020, this home comes with the peace of mind of some remaining new home warranty.

Step inside and discover a bright and airy open-concept main floor. The kitchen is a chef's delight, featuring sleek black stainless steel Samsung appliances, including a convection oven with a built-in air fryer. The kitchen island provides plenty of prep space, while the adjoining dining area comfortably accommodates a large table. Plenty of storage is available in the walk in pantry. The kitchen seamlessly flows into the cozy family room, making it ideal for entertaining.

The main level also includes a mudroom and laundry area, conveniently located off the double attached heated garage. The garage is equipped with its own sub-panel and counter-height outlets, adding to the home's functionality.

Outdoor living at its finest! Step out to the impressive 24' x 10' upper deck, or relax on the lower 12' x 12' deck, all overlooking the beautifully landscaped yard. The pie-shaped lot expands at the rear to offer green space and a walking trail, providing both privacy and nature right at your doorstep. The yard is fully fenced with rubber rock edging and features an in-ground sprinkler system, making maintenance a breeze. There is also back lane



access to the back yard.

Additional features of this home include central vacuum, air conditioning, and a heated garage. The basement is roughed in for heated floors and a wet bar, offering endless possibilities for customization. The windows are equipped with custom upgraded automatic blinds.

Upstairs you'll find 3 well-sized bedrooms, including the luxurious master suite, complete with a walk-in closet and a spa-like ensuite with a separate tub and shower. A spacious bonus room provides additional living space for relaxation or entertainment.

The fully finished basement offers even more room to spread out, with a large family room, a fourth bedroom, and a beautifully designed bathroom with custom-tiled bath and shower.

This home truly has it all—comfort, style, and thoughtful details. Don't miss your chance to make it yours!

Built in 2020

Essential Information

MLS® #	A2200667
Price	\$599,000
Bedrooms	4
Bathrooms	4.00
Full Baths	3
Half Baths	1
Square Footage	1,841
Acres	0.13
Year Built	2020
Type	Residential
Sub-Type	Detached
Style	2 Storey
Status	Active

Community Information

Address 102 Palmer Circle

Subdivision	Panorama Estates
City	Blackfalds
County	Lacombe County
Province	Alberta
Postal Code	T4M 0N8

Amenities

Parking Spaces	2
Parking	Double Garage Attached
# of Garages	2

Interior

Interior Features	Central Vacuum, Kitchen Island, No Smoking Home, Pantry
Appliances	Central Air Conditioner, Convection Oven, Dishwasher, Microwave, Refrigerator, Washer/Dryer
Heating	Forced Air
Cooling	Central Air
Has Basement	Yes
Basement	Finished, Full

Exterior

Exterior Features	BBQ gas line, Private Yard
Lot Description	Back Lane, Back Yard, City Lot, Landscaped, Backs on to Park/Green Space, Few Trees, Lawn, Low Maintenance Landscape, No Neighbours Behind, Pie Shaped Lot, Private, Underground Sprinklers
Roof	Shingle
Construction	Mixed
Foundation	Poured Concrete

Additional Information

Date Listed	March 9th, 2025
Days on Market	34
Zoning	R1M

Listing Details

Listing Office	Realty Executives Alberta Elite
----------------	---------------------------------

Data is supplied by Pillar 9â„¢ MLS® System. Pillar 9â„¢ is the owner of the copyright in its MLS® System. Data is deemed reliable but is not guaranteed accurate by Pillar 9â„¢. The trademarks MLS®, Multiple Listing Service® and the associated logos are owned by The Canadian Real Estate Association (CREA) and identify the quality of services provided by real estate professionals who are members of CREA. Used under license.