

\$679,990 - 135 Douglas Ridge Mews Se, Calgary

MLS® #A2201406

\$679,990

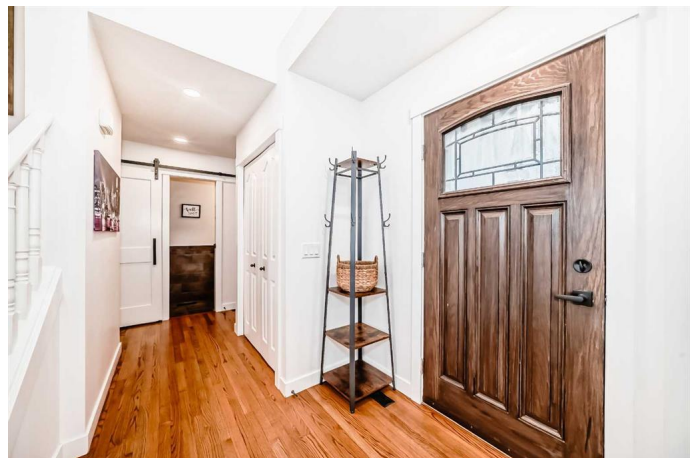
3 Bedroom, 3.00 Bathroom, 1,662 sqft
Residential on 0.12 Acres

Douglasdale/Glen, Calgary, Alberta

Welcome to this stunning home in the highly sought-after community of Douglasdale! Step inside to a bright and inviting foyer with soaring 17'™ ceilings and beautiful hardwood floors.

The spacious living and dining areas are sunny and bright. The beautifully updated kitchen is perfect for entertaining, featuring stainless steel appliances, a large island, a pantry, and plenty of quartz counter space. The cozy breakfast nook overlooks the backyard, filling the space with natural light. The family room is warm and welcoming, complete with a gas fireplace and mantle. A convenient main-floor laundry room and a stylish 2-piece bath complete this level.

Upstairs, the primary bedroom offers a walk-in closet and a luxurious 4-piece ensuite with heated floors. 2 additional generous-sized bedrooms and another updated 4 pc. bath, also with heated floors, complete the upper level. The fully finished basement is designed for entertainment, featuring a fantastic recreation room and a bar! Ample storage ensures everything has its place. The Garage looks like a dealership showroom! It features fully commercial grade epoxy flooring, painted walls, upgraded lighting, and a new high efficiency heater. Step outside to your private backyard retreat—a true oasis designed for relaxation and enjoyment. Surrounded by mature trees, privacy structures, and gardens featuring day lillies, tulips, roses, and stunning greenery. This dream outdoor space features a large 2-tier



deck creating the perfect setting for summer gatherings. Additional features include a double attached garage, central A/C and more! Move-in ready and waiting for you to call it home!

Built in 1994

Essential Information

MLS® #	A2201406
Price	\$679,990
Bedrooms	3
Bathrooms	3.00
Full Baths	2
Half Baths	1
Square Footage	1,662
Acres	0.12
Year Built	1994
Type	Residential
Sub-Type	Detached
Style	2 Storey
Status	Active

Community Information

Address	135 Douglas Ridge Mews Se
Subdivision	Douglasdale/Glen
City	Calgary
County	Calgary
Province	Alberta
Postal Code	T2Z 2M2

Amenities

Parking Spaces	4
Parking	Double Garage Attached
# of Garages	2

Interior

Interior Features	Bar, Built-in Features, Chandelier, Closet Organizers, High Ceilings, Kitchen Island, Pantry, Storage, Walk-In Closet(s)
-------------------	--

Appliances	Dishwasher, Dryer, Garage Control(s), Microwave Hood Fan, Refrigerator, Stove(s), Washer
Heating	Forced Air
Cooling	Central Air
Fireplace	Yes
# of Fireplaces	1
Fireplaces	Gas
Has Basement	Yes
Basement	Finished, Full

Exterior

Exterior Features	Lighting, Other, Private Yard
Lot Description	Back Yard, Front Yard, Low Maintenance Landscape, Other, Pie Shaped Lot, Private, Cul-De-Sac
Roof	Asphalt Shingle
Construction	Brick, Other, Vinyl Siding, Wood Frame
Foundation	Poured Concrete

Additional Information

Date Listed	March 12th, 2025
Days on Market	21
Zoning	R-CG

Listing Details

Listing Office	eXp Realty
----------------	------------

Data is supplied by Pillar 9â,,ç MLSÂ® System. Pillar 9â,,ç is the owner of the copyright in its MLSÂ® System. Data is deemed reliable but is not guaranteed accurate by Pillar 9â,,ç. The trademarks MLSÂ®, Multiple Listing ServiceÂ® and the associated logos are owned by The Canadian Real Estate Association (CREA) and identify the quality of services provided by real estate professionals who are members of CREA. Used under license.