

# \$419,900 - 24 Clark Crescent Se, Medicine Hat

MLS® #A2202200

**\$419,900**

3 Bedroom, 3.00 Bathroom, 1,942 sqft

Residential on 0.15 Acres

Southview-Park Meadows, Medicine Hat, Alberta

Welcome to this charming two-storey family home, perfectly situated in a quiet yet central location, just steps from scenic walking paths, breathtaking coulees, and excellent schools.

Enjoy the spacious backyard—ideal for outdoor activities, entertaining, or simply unwinding in your private oasis. Inside, the cozy family room is a true highlight, featuring a stunning cedar wood ceiling and a charming fireplace that creates a warm, welcoming atmosphere. With direct access to the backyard, this space is perfect for hosting gatherings, relaxing under the stars, or even transforming into a fantastic fourth bedroom!

The main level offers an inviting and function concept with a large front living room with large picture windows bringing in beautiful natural light. This space openly flows into your dining room which then brings you into the good size kitchen complete with loads of storage, counter space, and a center island.

Upstairs, youâ€™ll find three generously sized bedrooms, including a wonderful primary suite complete with a large walk-in closet and a full ensuite bathroom—offering plenty of space for your personal retreat. The 4 piece bathroom is so sweet with its finishes making it a space to appreciate.



The basement is fully developed offering additional overflow living space available to suit your personal needs.

Additional features include a single attached garage with direct home access for added convenience and security. A fully landscaped property with curb appeal that pops, a mature yard and shed for extra outdoor storage. Donâ€™t miss this incredible opportunity to own a beautiful family home with a unique layout. This home is waiting for memories to be made, will they be yours?

Built in 1976

**Essential Information**

MLS® #	A2202200
Price	\$419,900
Bedrooms	3
Bathrooms	3.00
Full Baths	2
Half Baths	1
Square Footage	1,942
Acres	0.15
Year Built	1976
Type	Residential
Sub-Type	Detached
Style	2 Storey
Status	Active

**Community Information**

Address	24 Clark Crescent Se
Subdivision	Southview-Park Meadows
City	Medicine Hat
County	Medicine Hat
Province	Alberta

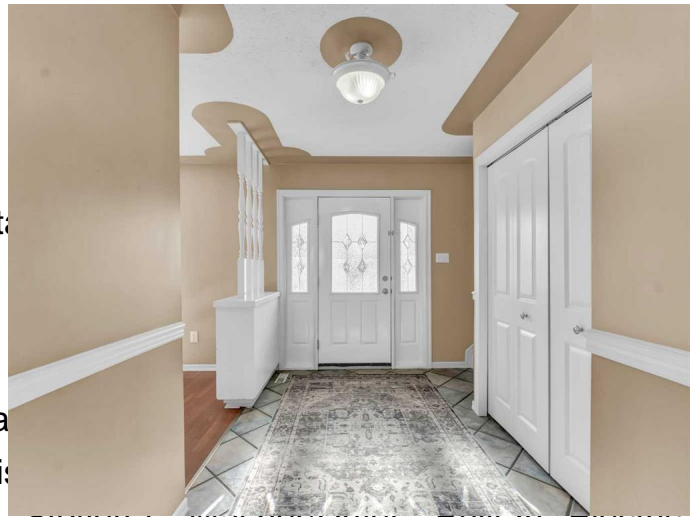
Postal Code T1B 1S1

### Amenities

Parking Spaces 1  
Parking Off Street, Single Garage Attached  
# of Garages 1

### Interior

Interior Features Central Vacuum, Kitchen Island  
Appliances Central Air Conditioner, Dishwasher, Electric Range Hood, Refrigerator, Stove(s), Washer/Dryer, Built-in Electric Range  
Heating Forced Air  
Cooling Central Air  
Fireplace Yes  
# of Fireplaces 1  
Fireplaces Gas  
Has Basement Yes  
Basement Finished, Full



### Exterior

Exterior Features Private Yard  
Lot Description Landscaped, Private, Street Lighting  
Roof Asphalt Shingle  
Construction Mixed  
Foundation Poured Concrete

### Additional Information

Date Listed March 20th, 2025  
Days on Market 33  
Zoning R-LD

### Listing Details

Listing Office ROYAL LEPAGE COMMUNITY REALTY

Data is supplied by Pillar 9â„¢ MLSÂ® System. Pillar 9â„¢ is the owner of the copyright in its MLSÂ® System. Data is deemed reliable but is not guaranteed accurate by Pillar 9â„¢. The trademarks MLSÂ®, Multiple Listing ServiceÂ® and the associated logos are owned by The Canadian Real Estate Association (CREA) and identify the quality of services provided by real estate professionals who are members of CREA. Used under license.