

\$489,900 - 99 Saddlestone Drive Ne, Calgary

MLS® #A2206765

\$489,900

3 Bedroom, 3.00 Bathroom, 1,538 sqft
Residential on 1.12 Acres

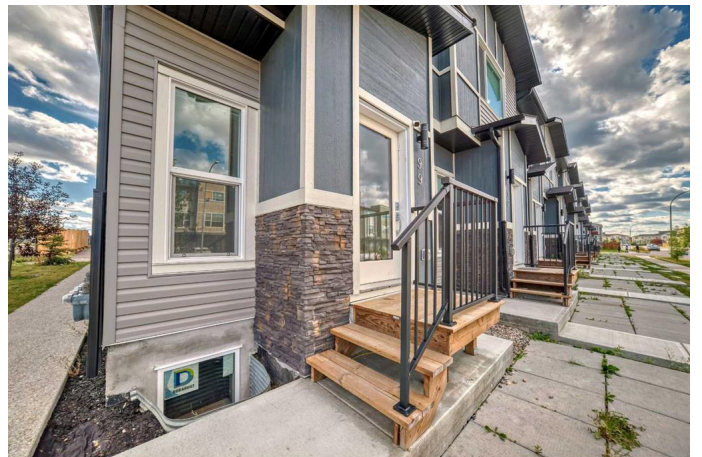
Saddle Ridge, Calgary, Alberta

CORNER HOUSE, BACKING ON TO GREEN SPACE WITH LOW CONDO FEES. OPEN CONCEPT FLOOR PLAN. MAIN FLOOR KITCHEN FEATURES QUARTZ COUNTERTOP, STAINLESS STEEL APPLIANCES, CHIMEY HOOD FAN, KITCHEN ISLAND WITH PANTRY. UPSTAIRS HAS 3 SPACIOUS BEDROOM 2 FULL BATHROOMS. BACKDOOR ENTRY. UNFINISHED BASEMENT WITH POTENTIAL TO BUILD BEDROOM /REC ROOM. CLOSE TO ALL AMENTIES LIKE CTRAIN GYM SCHOOLS SHOPPING. MUST SEE.

Built in 2021

Essential Information

MLS® #	A2206765
Price	\$489,900
Bedrooms	3
Bathrooms	3.00
Full Baths	2
Half Baths	1
Square Footage	1,538
Acres	1.12
Year Built	2021
Type	Residential
Sub-Type	Row/Townhouse
Style	2 Storey
Status	Active



Community Information

Address	99 Saddlestone Drive Ne
Subdivision	Saddle Ridge
City	Calgary
County	Calgary
Province	Alberta
Postal Code	T3J 5J7

Amenities

Amenities	None
Parking Spaces	1
Parking	Single Garage Attached
# of Garages	1

Interior

Interior Features	See Remarks
Appliances	Dishwasher, Electric Stove, Range Hood, Refrigerator, Washer/Dryer
Heating	Central
Cooling	None
Has Basement	Yes
Basement	Full, Unfinished

Exterior

Exterior Features	Other
Lot Description	Other
Roof	Asphalt Shingle
Construction	Other
Foundation	Poured Concrete

Additional Information

Date Listed	March 29th, 2025
Days on Market	6
Zoning	M-1
HOA Fees	211
HOA Fees Freq.	MON

Listing Details

Listing Office	Executive Real Estate Services
----------------	--------------------------------

Data is supplied by Pillar 9â„¢ MLSÂ® System. Pillar 9â„¢ is the owner of the copyright in its MLSÂ® System. Data is

deemed reliable but is not guaranteed accurate by Pillar 9â,,ç. The trademarks MLSÂ®, Multiple Listing ServiceÂ® and the associated logos are owned by The Canadian Real Estate Association (CREA) and identify the quality of services provided by real estate professionals who are members of CREA. Used under license.