

\$475,000 - 1953 Parkside Green, Coaldale

MLS® #A2210626

\$475,000

4 Bedroom, 3.00 Bathroom, 1,110 sqft

Residential on 0.12 Acres

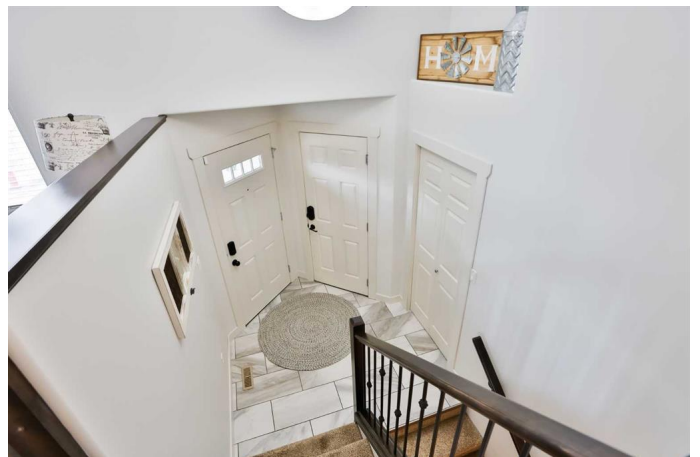
NONE, Coaldale, Alberta

Welcome to 1953 Parkside Green, a stunning corner lot in Coaldale that boasts immense street appeal and is just a short walk from the dog park. This fully developed bi-level home offers just under 1,150 square feet of living space and was built in 2012. It features four bedrooms and three bathrooms.

Upon entering, you'll be greeted by beautiful vaulted ceilings, laminate flooring, iron spindles, and an abundance of built-in cabinets and closet storage throughout the kitchen. The kitchen itself has received several lovely updates, including new countertops, a stylish backsplash, an undermount sink with a modern faucet, and stainless steel appliances. There are two bedrooms conveniently located on the main floor. The main bedroom showcases a charming wooden niche feature, while the main bathroom is equipped with a five-foot tub and shower. The primary bedroom includes a walk-in closet and an ensuite bathroom featuring a five-foot shower and plenty of storage space.

The spacious bi-level basement is flooded with natural light thanks to its large windows and features a corner stone gas fireplace, creating a cozy atmosphere. It also includes a delightful bar area complete with a beer and wine fridge, a sink, extra decorative storage and surround sound. .

This home offers roughed-in laundry hookups on the main floor as well as in the basement. The backyard features an enlarged composite deck with a privacy obscured glass wall and a



gas line for barbecuing or fire pit. You'll find mature trees, a fire pit area, and underground sprinklers, perfect for outdoor entertaining. Completing this property is a double car garage equipped with a heater and built-in storage.

Coaldale is an desirable small community offering wonderful new amenities that make it an ideal place to plant your roots!

Don't miss your chance to own this beautiful property!

Built in 2012

Essential Information

MLS® #	A2210626
Price	\$475,000
Bedrooms	4
Bathrooms	3.00
Full Baths	3
Square Footage	1,110
Acres	0.12
Year Built	2012
Type	Residential
Sub-Type	Detached
Style	2 Storey
Status	Active

Community Information

Address	1953 Parkside Green
Subdivision	NONE
City	Coaldale
County	Lethbridge County
Province	Alberta
Postal Code	T1M 1R7

Amenities

Parking Spaces	4
Parking	Double Garage Attached
# of Garages	2

Interior

Interior Features	Bar, Closet Organizers, Pantry, Quartz Counters, Storage, Vaulted Ceiling(s), Walk-In Closet(s)
Appliances	Bar Fridge, Central Air Conditioner, Dishwasher, Electric Cooktop, Microwave Hood Fan, Refrigerator, Washer/Dryer, Window Coverings, Wine Refrigerator
Heating	Forced Air, Natural Gas
Cooling	Central Air
Fireplace	Yes
# of Fireplaces	1
Fireplaces	Electric
Has Basement	Yes
Basement	Finished, Full

Exterior

Exterior Features	Fire Pit
Lot Description	Back Lane, Back Yard, Corner Lot, Front Yard, Landscaped, Lawn, Treed, Underground Sprinklers
Roof	Asphalt Shingle
Construction	Vinyl Siding, Wood Frame
Foundation	Poured Concrete

Additional Information

Date Listed	April 14th, 2025
Days on Market	4
Zoning	R-L

Listing Details

Listing Office	RE/MAX REAL ESTATE - LETHBRIDGE
----------------	---------------------------------

Data is supplied by Pillar 9â„¢ MLS® System. Pillar 9â„¢ is the owner of the copyright in its MLS® System. Data is deemed reliable but is not guaranteed accurate by Pillar 9â„¢. The trademarks MLS®, Multiple Listing Service® and the associated logos are owned by The Canadian Real Estate Association (CREA) and identify the quality of services provided by real estate professionals who are members of CREA. Used under license.